

Solutions for Warehouse and Distribution Facilities



- ⇒ Integrated Solutions for Air Control
- ⇒ Reduce HVAC Maintenance
- ⇒ Maximize Energy Efficiency
- ⇒ Protect in Extreme Weather

Design Ventilation Systems for the Unique Environments in Warehouses and Distribution Centers



Manage Airflow & Minimize Energy Costs

Effectively managing external airflow impacts utility costs. United Enertech designs, develops, and manufactures air movement and control products that offer innovation, reliability, and fast turnaround.

Warehouses and distribution centers have unique building characteristics that require addressing when looking at ventilation, air movement, indoor air quality (IAQ), humidity control, and heating and cooling.

High ceilings with large open spaces, large exterior doors that create an opportunity for exposure to weather conditions, and energy costs to maintain large buildings are all factors in determining the best solutions for ventilation and air movement within the varied spaces.

Our Solutions for Warehouse and Distribution Facilities



United Enertech dampers are low leakage and offer low pressure drop. They are designed to keep the environment comfortable for employees so they can stay productive and regulate the temperature to maintain product quality.



Weather louvers protect the outside opening in a building's exterior walls. These louvers may be used for exhaust or intake air.

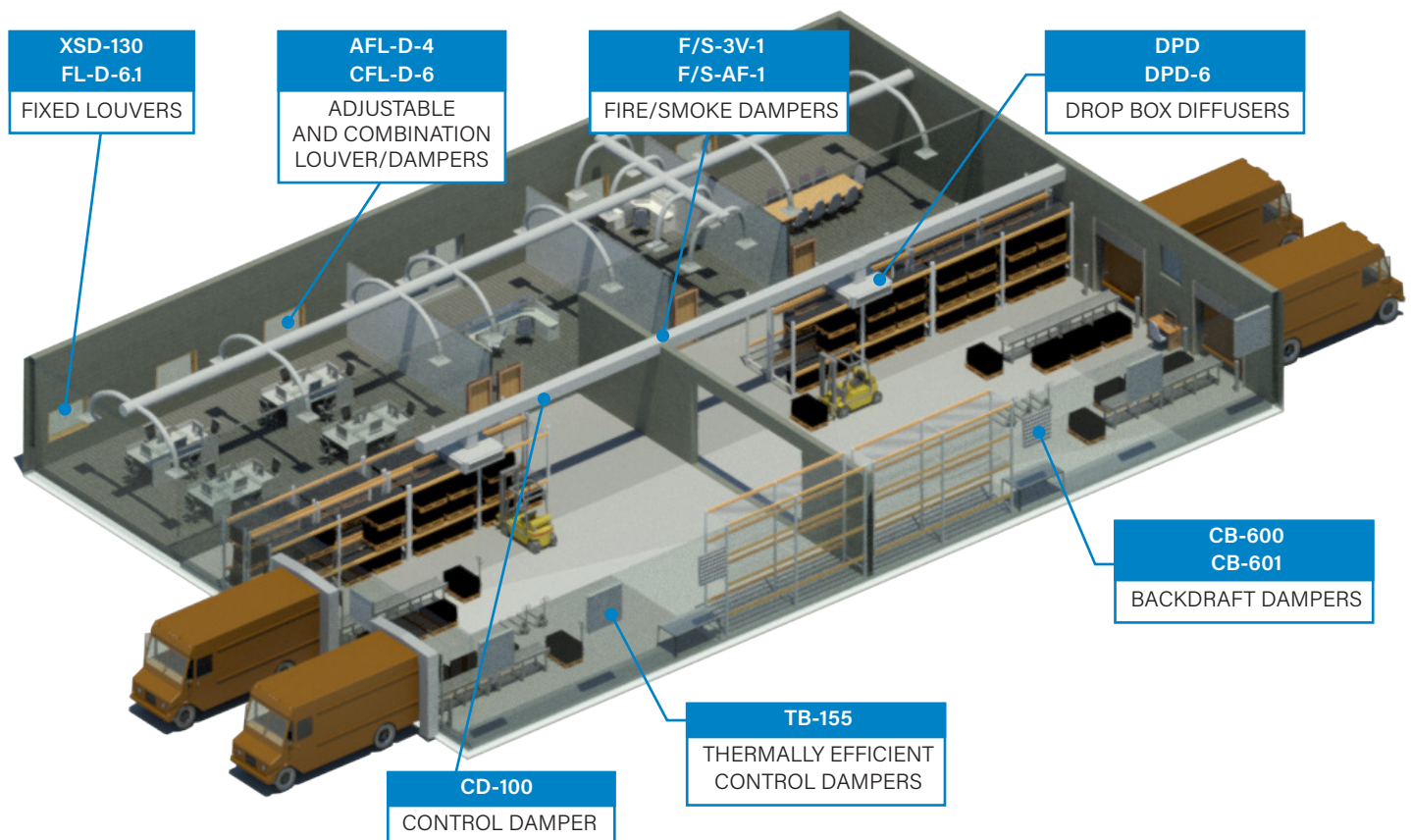
For more information, please contact a United Enertech representative at 423-698-7715 or email sales@unitedenertech.com.

United Enertech

The Air Control Experts

Our team is focused on meeting our customers' needs for quality and speed while maintaining the flexibility to adapt to custom specifications.

- **Over 30 years** of quality products and reliable service.
- **Hundreds of products** for a variety of applications, ranging from UL listed dampers and Miami-Dade County approved louvers to drop plenum diffusers, access doors, and ventilators.
- **U.S.-based manufacturing** includes four facilities, each a center of excellence.
- **Our technical resources allow us to be flexible**, and we pride ourselves on our responsiveness and our ability to adapt to your specifications.
- **In-house testing laboratory** for the preliminary testing on UL listed products.



Integrated Solutions for Airflow Control

Control Dampers

Control dampers regulate airflow through duct work by opening and closing their blades. This simple action can serve many purposes, such as directing airflow to a specific part of the building or for mixing hot and cold air streams for air conditioning.

Our louvers and dampers help to reduce utility costs by having low pressure drop on both louvers and dampers and extremely low leakage on dampers.

Our thermally broken dampers offer thermally broken aluminum frames and thermally insulated and broken airfoil blades to eliminate the transfer of cold or heat and reduce condensation, while providing exceptional air control in medium to high pressure and velocity applications.



TB-155

When thermal efficiency is needed, the TB-155 is the answer. Great for warehouses and distribution centers, this thermally broken damper is designed to eliminate transfer of high heat or low cold penetration and reduce condensation.

- Constructed with heavy duty double-skin extruded aluminum blade.
- Manufactured with aluminum and corrosion resistant zinc plated steel linkage.
- Licensed to bear the AMCA Seal, which applies to air performance and air leakage ratings.



CD-100

The model CD-100 is a rectangular damper with .125 extruded aluminum blades and .081 extruded aluminum frames. This model can be built in one section up to 52" w x 72" h. If a larger size is required, contact us for additional ordering details.

- Designed with extruded aluminum single skin blade with low pressure drop.
- Licensed to bear the Certaire Certified Air Ratings Seal. Class 1A leakage.



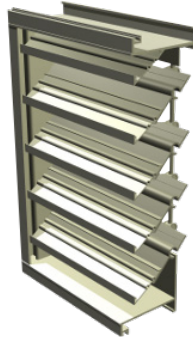
Combination Louver/Damper

Combination louver/damper products are designed to protect air intake and exhaust openings in exterior walls from unwanted elements.

CFL-D-4

The Model CFL-D-4 is a 4" deep extruded aluminum drainable louver damper combination that can be used for exhaust or intake air.

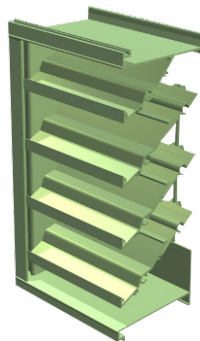
- Low profile 4" depth.
- Low pressure drop.



CFL-D-6

The Model CFL-D-6 is a 6" deep extruded aluminum drainable louver damper combination that can be used for exhaust or intake air.

- Beginning point of water penetration above 1250 feet per minute (FPM).
- High free are and low pressure drop.
- Licensed to bear the AMCA Seal, which applies to air performance and air leakage ratings.



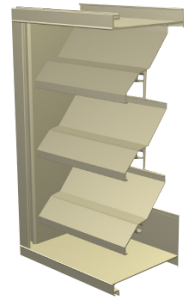
Adjustable Louvers

Adjustable louvers are operational from fully open to fully closed for regulation of air intake and exhaust. Drainable adjustable louvers provide added protection against water penetration.

FA-157

The FA-157 is a 6" deep high performance 90 degree adjustable louver designed to protect openings in building exterior walls that require complete shut off.

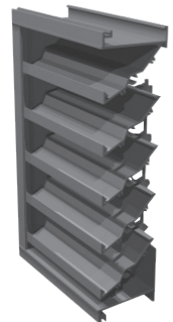
- Design features include in airstream linkage and a low pressure drop rating.
- Licensed to bear the AMCA Seal, which applies to air performance.



AFL-D-4

The Model AFL-D-4 is a 4" deep high performance extruded aluminum adjustable drainable louver.

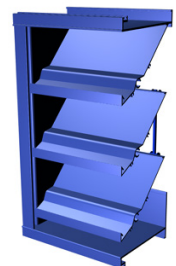
- Can be used for exhaust or intake air.
- Licensed to bear the AMCA Seal, which applies to air performance ratings and water penetration ratings.



AFL-D-6

The model AFL-D-6 is a 6" deep extruded aluminum adjustable drainable louver.

- Can be used for exhaust and intake air.
- Licensed to bear the AMCA Seal, which applies to air performance ratings and water penetration ratings.

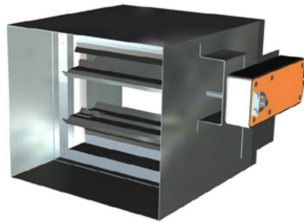


Reduce HVAC Maintenance

Combination Fire/Smoke Dampers

FS-3V-I

- 3V Blade Class 1 leakage.
- Low pressure drop.
- UL555 and UL555S listed.



Drum Louver Drop Diffuser/Plenums

DPD

The model DPD is a drop diffuser plenum that offers drum louvers as diffusers. This model can be custom built up to 100,000 cfm.



- This model can be custom built up to 100,000 cfm.
- Optional painted finish.

TB-155

When thermal efficiency is needed, the TB-155 is the answer. Great for warehouses and distribution centers, this thermally broken damper is designed to eliminate transfer of high heat or low cold penetration and reduces condensation.

- Constructed with heavy duty double-skin extruded aluminum blade.
- Manufactured with aluminum and corrosion resistant zinc plated steel linkage.
- Licensed to bear the AMCA Seal, which applies to air performance and air leakage ratings.



United Enertech TB-155 is the highest performing thermally broken damper in the industry.



Protect in Extreme Weather Conditions

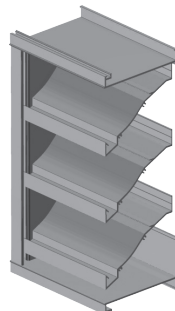
Weather Louvers

Weather louvers offer extra protection in more demanding applications where weather situations, such as high wind or heavy rain exist. These louvers allow for air ventilation while protecting from unwanted elements.

FL-D-6.1

The model FL-D-6.1 is a high-performance weather louver designed to protect the outside opening in a building's exterior walls. These louvers may be used for exhaust or intake air.

- Designed with a birdscreen constructed of .5" x .050" flattened aluminum in a removable frame.
- Licensed to bear the AMCA Seal, which applies to air performance ratings and water penetration ratings.



TB-155

Thermally Broken Damper

Great for warehouses and distribution centers, this thermally broken damper is designed to eliminate transfer of high heat or low cold penetration and reduces condensation.



Your Source for Warehouse and Distribution Facilities Solutions

Contact us to learn more about our high-quality products for warehouse and distribution facilities. You can count on us for engineering expertise, quick turnaround, and flexibility to customize.



www.unitedenertech.com

3005 S. Hickory Street
Chattanooga, TN 37407
423-698-7715

sales@unitedenertech.com

