

Louvers

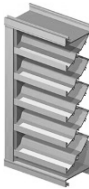
D-HFA-6



- High Performance Alum. Fixed Blade
- 6" High Free Area
- 60% Free Area
- 915 FPM Max Velocity

Ruskin	ELF6375DX
Greenheck	ESD-635
Arrow United	N/A
Nailor	1606DHP
Pottorff	EFJ-637-HP

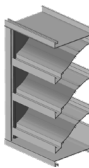
D-HFA-4



- 4" Deep Alum. Drainable
- 56% Free Area
- 901 FPM Max Velocity
- .14 W.G. Pressure Drop

Ruskin	ELF375DX
Greenheck	ESD-435
Arrow United	EA-415D
Nailor	1604D
Pottorff	EFD-437

FL-D-6.1



- 6" Deep Alum. Drainable
- 54% Free Area
- 1,250 FPM Max Velocity
- .12 W.G. Pressure Drop

Ruskin	ELF6375DX
Greenheck	ESD-635
Arrow United	EA-615D
Nailor	1606D
Pottorff	EFD-637

XSD-130



- 5" Deep Alum. Wind Driven Rain
- 46% Free Area
- Class A @ 916 FPM
- .14 W.G. Pressure Drop

Ruskin	EME520DD
Greenheck	EHH-501
Arrow United	EA-520-D
Nailor	1605WD
Pottorff	ECD-545

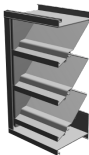
CEL-D-6



- 6" Deep Alum. Combination
- 49% Free Area
- 1,079 FPM Beginning Point of Water Penetration
- .11 W.G. Pressure Drop

Ruskin	ELC6375DXW
Greenheck	EAC-601
Arrow United	EA-680-D
Nailor	N/A
Pottorff	EXD-645

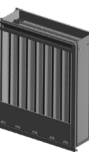
DCFL-D-6



- 6" Deep Alum. Dade County
- 54% Free Area
- 922 FPM Max Velocity
- .09 W.G. Pressure Drop

Ruskin	ELF6375DXD
Greenheck	ESD-635D
Arrow United	EA-64
Nailor	1606DHPM
Pottorff	EFD-637-MD

WDV-130



- 5" Deep Alum. Dade County
- Drainable Vertical Fixed Blade
- 922 FPM Max Velocity
- AMCA 540/550

Ruskin	EME5625MD
Greenheck	EVH-501D
Arrow United	EAV-66
Nailor	1605WDVM
Pottorff	ECV-645-MD

Manual Volume, Control, Backdraft Dampers

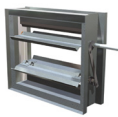
CD-100/101



- Extruded Alum. Frame
- 3V Extruded Alum. Blades
- Class 1A Leakage
- 2,600 FPM Max. Velocity

Ruskin	CD51
Greenheck	N/A
Arrow United	506
Nailor	N/A
Pottorff	N/A

CD-110/111



- Galvanized Steel Construction
- 16 ga. 3V Blades
- Class 1A Leakage
- 3,500 FPM Max. Velocity

Ruskin	CD35
Greenheck	VCD-23
Arrow United	1770
Nailor	1020
Pottorff	CD-42

CD-150/151



- Extruded Alum. Construction
- Airfoil Blades
- Class 1A Leakage
- 6,000 FPM Max. Velocity

Ruskin	CD50
Greenheck	VCD-43
Arrow United	AFD-20
Nailor	2020
Pottorff	CD-52

CD-160/161



- Galvanized Steel Construction
- Airfoil Blades
- Class 1A Leakage
- 6,000 FPM Max. Velocity

Ruskin	CD60
Greenheck	VCD-33
Arrow United	515SAF
Nailor	1120
Pottorff	CD-46

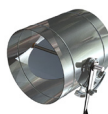
CB-600



- Extruded Aluminum Construction
- 2,800 FPM Max. Velocity
- 3" W.G. Max Pressure
- Optional Field Mount Actuator Kit

Ruskin	BD2/A1
Greenheck	ES-30
Arrow United	500-B
Nailor	1370
Pottorff	BD-150

Model RD



- True Round Control/Balancing Damper
- Galvanized Steel Construction
- 2,600 FPM Max. Velocity
- 3" W.G. Max Pressure

Ruskin	MDRS25
Greenheck	MBDR-50
Arrow United	200VCRD
Nailor	1890
Pottorff	CD-10R

MD-115/116



- Galvanized Steel Construction
- Opposed or Parallel Blades
- 3,500 FPM Max. Velocity
- 4" W.G. Max Pressure

Ruskin	MD-35
Greenheck	MBD-15
Arrow United	1660
Nailor	1820
Pottorff	MD-42

Life Safety

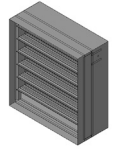
F/S-3V-I



- UL555(S) 1 ½ Hr. Class I
- Single Side Angle - 108"x96"
- Factory Installed Test Switch

Ruskin	FSD37
Greenheck	FSD-211
Arrow United	AR-1
Nailor	1271
Pottorff	FSD-141

F/S-AF-I



- Airfoil Blades
- UL555(S) 1 ½ Hr. Class I
- Single Side Angle - 108"x96"
- Factory Installed Test Switch

Ruskin	FSD60
Greenheck	FSD-311
Arrow United	UA1
Nailor	1220
Pottorff	FSD-151

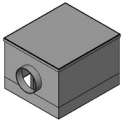
F/S-3V-II



- UL555(S) 1 ½ Hr. Class II
- Single Side Angle - 108"x96"
- Factory Installed Test Switch

Ruskin	FSD36
Greenheck	FSD-212
Arrow United	AR-2
Nailor	1270
Pottorff	FSD-142

C-SR-WT



- UL555C
- UL555 1 hr. Rated
- Factory Plenum Box
- Optional Volume Adjustment

Ruskin	CFD7T
Greenheck	CRD-1WT
Arrow United	N/A
Nailor	0755
Pottorff	CFD-521

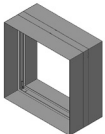
FDD-ALB



- Dynamic Fire damper
- UL555 1 ½ hr. Rated
- Single Side Angle - 72"x36" or 36"x72"
- Optional Sleeve Lengths and Gauges

Ruskin	DIBD2
Greenheck	DFD-150
Arrow United	D17A
Nailor	D0110
Pottorff	VFD-10D-A

FDD-SALB



- Dynamic Fire Damper
- UL555 1 ½ hr. Rated
- Single Side Angle
- 12" Long Integral Sleeve

Ruskin	DIBD20
Greenheck	DFD-150X12
Arrow United	D17X
Nailor	D0114-12
Pottorff	VFD-10D-A

Penthouses

PFL-D-4

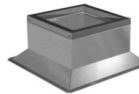


- 4" Deep Drainable Louvered Penthouse
- AMCA Certified Louvers
- Less than .01 oz/sq. ft. water @ 1250 FPM
- Free Area Above 50%

Ruskin	PHB
Greenheck	WIH/WRH
Pottorff	ECD-445-PH

Conventional Curbs

UCC-2



- Insulated Curb
- Optional Curb Covers
- Optional Square to Round Covers
- Vented Curbs

Pate	PC-2
Greenheck	GPI

Access Doors

L-95, O-95



- Cam or Hinged Doors
- Gasketed Flange Mounting
- Aluminum or Stainless-Steel Construction
- Optional Key Lock

Ruskin	ADC/ADH
Greenheck	CAD/HAD
DuctMate	FD*C/FD*H
Kees	ADC/ADH

Drop Boxes

DPD Drum Louver Drop Diffuser/Plenums



- Double Deflection Grilles
- 1" Ultra Lite Duct Liner
- Optional Powder Coated
- Optional Higher Velocities

Ruskin	DLD
Kees	DBD
Carnes	TDBA
Titus	CSR/CSR-P

Industrial Dampers

NAH-720-1



- Static Pressures up to 20 WG
- Parallel or Opposed Blades
- Optional Stainless-Steel Construction
- Optional Bearing Types

Ruskin	CD80AF
Greenheck	HCD-230-LE
Pottorff	CD-93/94
Nailor	1980

We offer exceptional lead times and rush order options. Contact us today!

