

Product Comparison Guide





Made in the USA
Over 30 Years of Quality Products & Reliable Service

Based in Chattanooga, Tennessee, United Enertech designs, develops, and manufactures air movement and control products that offer innovation, reliability, and fast turnaround. With over 30 years of experience, we recognize the fast-paced nature of our industry and the importance of customization. Our team is focused on meeting our customers' needs for quality and speed while maintaining the flexibility to adapt to custom specifications.

We have hundreds of products for a variety of applications, ranging from UL listed dampers and Miami-Dade County approved louvers to drop plenum diffusers, access doors, and ventilators. We also have our own in-house testing laboratory for the preliminary testing on UL listed products.

United Enertech, specializes in quality – air control built on trust.



Table of Contents

Non-Drainable & Drainable Louvers.....	4
Wind-driven Rain and WDR Hurricane Louvers.....	6
Control, Manual Volume, and Backdraft Dampers.....	8
Life Safety Dampers.....	10

Non-Drainable & Drainable Louvers

United Enertech's Non-Drainable and Drainable Louvers offer competitive performance including models with best-in-class water penetration and pressure drop data, with industry best lead times and rush options available.

We offer custom paint matching and finishing on all of our louver products. And all louvers include United Enertech's Five Year Warranty.



Non-Drainable Louvers

EL-4

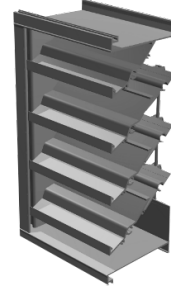


Best in Class: Beginning Point of Water Penetration

The EL-4 is AMCA certified and can be used for exhaust or intake air. This model offers competitive performance on free area, water penetration, and pressure drop.

Drainable Combo Louver/Damper

CFL-D-6

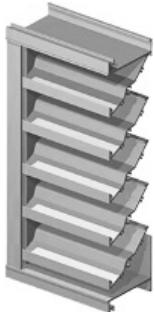


Best in Class: Free Area %, Beginning Point of Water Penetration, and Pressure Drop

The CFL-D-6 is a 6" deep high-performance drainable louver damper combination. This model offers best-in-class free area, water penetration, and pressure drop data. The CFL-D-6 is licensed to bear the AMCA seal, which applies to Air Performance and Water Penetration ratings.

Drainable Louvers

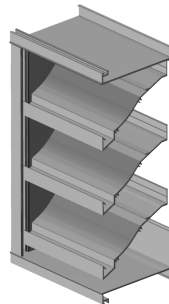
FLD-4



Best in Class: Beginning Point of Water Penetration and Pressure Drop

The FLD-4 is a high-performance 4" deep fixed louver. This model offers competitive performance on free area, water penetration, and pressure drop.

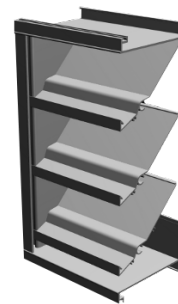
FL-D-6.1



Best in Class: Beginning Point of Water Penetration and Pressure Drop

The FL-D-6.1 is a 6" deep fixed weather louver. It incorporates drainable blades, a down-spouts jamb, and a gutter, all for high-performance. This model offers competitive performance on free area, water penetration, and pressure drop.

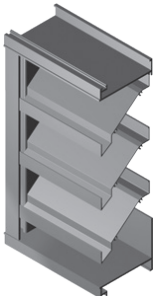
DCFL-D-6



Best in Class: Pressure Drop

The DCFL-D-6 hurricane louver is a 6" deep extruded aluminum drainable louver that has been tested and approved per Miami-Dade County. This louver has the Florida Building Code Product Approval and has the Texas Department of Insurance Submittal. It is AMCA 500-L rated, which applies to air performance and water penetration ratings.

D-HFA-4



The D-HFA-4 is a high-performance 4" deep fixed louver. This model resists water intrusion while providing a high free area of 56% and low pressure drop. The D-HFA-4 is licensed to bear the AMCA seal for water penetration and air performance.

D-HFA-6



The D-HFA-6 is a high-performance 6" deep fixed louver. This model resists water intrusion while providing a high free area of 60% and low pressure drop. The D-HFA-6 is licensed to bear the AMCA seal for water penetration and air performance.

The louver is engineered for use in Dade County and its municipalities, as well as for other regions that use Dade County codes.

Manufacturer	Model	Free Area %	Beginning Point of water penetration (fpm)	Pressure Drop @ beginning point of water penetration (in. w.g.)
Non-Drainable Louvers				
United Enertech	EL-4	53%	995	0.19
Greenheck	ESJ-401	53%	691	0.09
Pottorff	EFJ-437-HP	56%	912	0.14
Ruskin	ELF375X	54%	803	0.19
Drainable Louvers				
United Enertech	FL-D-4	50%	1056	0.12
United Enertech	D-HFA-4	56%	901	0.18
Greenheck	ESD-435	56%	989	0.17
Pottorff	EFD-437	58%	903	0.13
Ruskin	ELF375DX	54%	873	0.19
United Enertech	FL-D-6.1	54%	1250	0.16
United Enertech	D-HFA-6	60%	915	0.18
Greenheck	ESD-635	58%	1250	0.23
Pottorff	EFD-637	57%	1113	0.15
Ruskin	ELF6375DX	57%	1023	0.16
United Enertech	DCFL-D-6	54%	922	0.09
Greenheck	ESD-635D	59%	1250	0.24
Pottorff	EFD-637-MD	54%	1100	0.14
Ruskin	ELF6375DXD	57%	1023	0.16
Drainable Combo Louver/Damper				
United Enertech	CFL-D-6	47%	1250	0.11
Greenheck	EAC-601	46%	1020	0.17
Pottorff	EXD-645	44%	1050	0.19
Ruskin	ELC6375DAX	47%	1169	0.17

Wind-driven Rain and WDR Hurricane Louvers

United Enertech Wind-driven Rain Louvers are cost efficient and are consistently among the most competitive in the industry. They offer Class A wind-driven rain ratings and low pressure drop.

Wind-Driven Rain Louvers

XSD-130



Best in Class: Pressure Drop

The XSD-130 is a 5" deep wind-driven rain sight-proof louver designed to protect intake and exhaust openings in buildings while reducing the amount of wind driven rain penetration. The XSD-130 is licensed to bear the AMCA Seal. The AMCA certified rating seal applies to air performance and wind-driven rain.

WDR Hurricane Rated Louvers

WDV-130



Best in Class: 50 MPH Wind-Driven Rain Classification/Core Velocity (fpm)

The WDV-130 is a 5" deep vertical blade wind-driven rain/hurricane louver. It is AMCA 540 (Enhanced) & 550 Listed, has been issued a Miami-Dade County, FL Notice of Acceptance, has Florida Building Code Product Approval, and is an ideal choice when specifying louvers for a variety of applications.

Manufacturer	Model	Free Area %	50 MPH Wind-driven Rain Classification / core velocity (fpm)	Pressure Drop @ max. WDR velocity (in. w.g.)
Wind-Driven Rain Louvers				
United Enertech	XSD-130	46%	Class A at 468 fpm	0.06
Greenheck	EHH-501	43%	Class A at 683 fpm	0.09
Pottorff	ECD-545	46%	–	–
Ruskin	EME520DD	47%	Class A at 282 fpm	0.08
WDR Hurricane Rated Louvers				
United Enertech	WDV-130	48%	Class A at 985 fpm	0.17
Greenheck	EVH-501D	55%	Class A at 975 fpm	0.19
Pottorff	ECV-645-MD	46%	Class A at 1250 fpm	0.15
Ruskin	EME5625MD	38%	Class A at 980 fpm	0.13

Control, Manual Volume, and Backdraft Dampers

United Enertech commercial dampers offer best in class velocity and static pressure ratings along with competitive leakage class ratings.

Control Dampers

CD-100



Best in Class: Max. Velocity, Max. Pressure, and Leakage

The CD-100 is a rectangular damper designed with an extruded aluminum single skin blade with low pressure drop. It is licensed to bear the Certaire Certified Air Ratings Seal. The CD-100 offers some of the best pricing in the industry while maintaining a class 1A leakage. This is largely due to the highly tested 3V blade design from United Enertech.

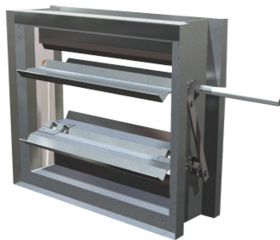
CD-150



Best in Class: Max. Velocity, Max. Pressure, and Leakage

The CD-150 is an extruded aluminum rectangular control damper. One section can be built up to 60"w x 72"h. If a larger size is required, contact us for additional ordering details. Licensed to bear the AMCA seal, which applies to air performance and air leakage ratings.

CD-110



Best in Class: Max. Velocity, Max. Pressure, and Leakage

The CD-110 (opposed blade) is a rectangular damper that has 16 gauge galvanized steel (3-V shaped) blades, and a galvanized roll formed frame. This model can be built in one section up to 48"w x 60"h. The CD-110 is licensed to bear the AMCA Seal. The AMCA Certified Rating Seal applies to air performance and air leakage ratings. The CD-110 offers some of the best pricing in the industry while maintaining a class 1A leakage. This is largely due to the highly tested 3V blade design from United Enertech.

CD-160

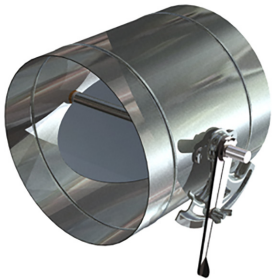


Best in Class: Max. Velocity, Max. Pressure, and Leakage

The CD-160 has double thick, galvanized steel airfoil blades and a galvanized steel frame. It is licensed to bear the AMCA Seal, which applies to air performance and leakage ratings.

Manual Volume Dampers

RD



Best in Class: Max. Velocity and Max. Pressure

The RD is a G-90 galvanized steel-built damper with factory mounted heavy duty locking hand quadrant designed especially for manual balancing applications. It is easy to install, seal, and it becomes part of the duct work.

Backdraft Dampers

CB-600



Best in Class: Max. Velocity

The CB-600 is a vertical or horizontal mounted backdraft damper that is designed to allow vertical or horizontal airflow and prevent reverse airflow.

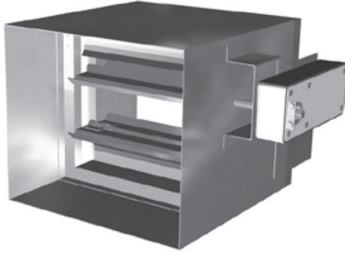
Manufacturer	Model	Max. Velocity (fpm)	Max. Pressure (in. w.g.)	Leakage Class
Control Dampers				
United Enertech	CD-100	2600	3"	1, 1A
Greenheck	N/A	N/A	N/A	N/A
Pottorff	N/A	N/A	N/A	N/A
Ruskin	CD51	2000	4"	N/A
United Enertech	CD-150	6000	8"	1, 1A
Greenheck	VCD-43	6000	8"	1, 1A
Pottorff	CD-51/52	6000	8"	1, 1A
Ruskin	CD50	4000	5.5"	2, 1, 1A
United Enertech	CD-110	3500	5"	1, 1A
Greenheck	VCD-23	3000	5"	1, 1A
Pottorff	CD-41/42	3000	4"	1, 1A
Ruskin	CD36	2000	4"	N/A
United Enertech	CD-160	6000	8"	1, 1A
Greenheck	VCD-33	4000	8"	1, 1A
Pottorff	CD45/46	4000	8"	1, 1A
Ruskin	CD60	4000	8"	1, 1A
Manual Volume Dampers				
United Enertech	RD	2600	3"	N/A
Greenheck	MBDR-50	2000	1"	N/A
Pottorff	CD-10R	1500	1"	N/A
Ruskin	MDRS25	1500	1"	N/A
Backdraft Dampers				
United Enertech	CB-600	2800	3"	8.8 cfm/sq.ft. @1"
Greenheck	ES-30	2000	6"	7.6 cfm/sq.ft. @1"
Pottorff	BD-150	1500	3"	10.7 cfm/sq.ft. @1"
Ruskin	BD2A2	1500	6"	7.7 cfm/sq.ft. @1"

Life Safety

United Enertech Fire, Fire Smoke, and Ceiling Radiation Dampers provide a range of sizes and specifications at competitive prices. Our life safety dampers offer quality construction at competitive prices and with industry-best lead times and rush availability.

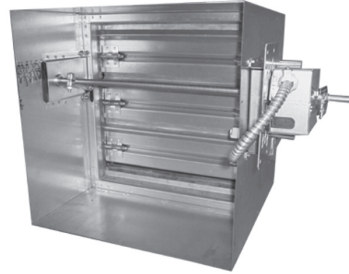
Fire & Smoke Dampers

F/S-3V-I



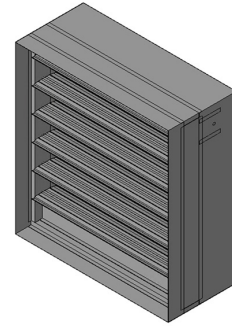
The F/S-3V-I is a class I leakage combination fire smoke damper. It is UL classified and tested per UL 555 & 555S.

F/S-3V-II



The F/S-3V-II is a class II leakage combination fire/smoke damper. It is UL classified and tested per UL 555 & 555S.

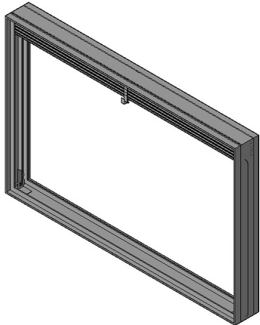
F/S-AF-I



The F/S-AF-I is a class I leakage, airfoil blade combination fire smoke damper. It is UL classified and tested per UL 555 & 555S.

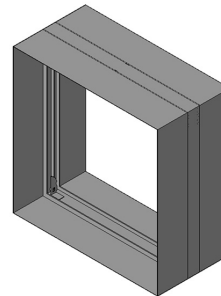
Curtain Fire Dampers

FDD-ALB



The FDD-ALB is a dynamic curtain fire damper. It is UL classified and tested per UL-555.

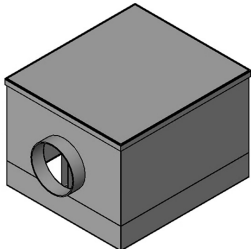
FDD-SALB



The FDD-SALB is a dynamic curtain fire damper with an integral sleeve. It is UL classified and tested per UL-555.

Ceiling Radiation Dampers (for wood truss systems)

C-SR-WT



The C-SR-WT is a ceiling radiation damper designed for wood truss floor/ceiling systems. It is UL classified and tested per UL-555C.

Manufacturer	Model	Max. Velocity (fpm)	Max. Pressure (in. w.g.)	Max. Vertical Size
Fire & Smoke Dampers				
United Enertech	F/S-3V-I	2000	4"	108"w x 96"h
Greenheck	FSD-211	2000	4", 6"	128"w x 100"h, 128"w x 96"h
Pottorff	FSD-141	2000	4"	144"w x 96"h
Ruskin	FSD37	2000	4"	120"w x 96"h
United Enertech	F/S-3V-II	2000	4"	108"w x 96"h
Greenheck	FSD-212	2000	4", 6"	128"w x 100"h, 128"w x 96"h
Pottorff	FSD-142	2000	4"	144"w x 96"h
Ruskin	FSD36	2000	4"	126"w x 96"h
United Enertech	F/S-AF-I	2000, 4000	4", 6"	108"w x 96"h, 72"w x 48"h
Greenheck	FSD-311	4000	4", 8"	128"w x 100"h @ 4 in. w.g.
Pottorff	FSD-151	4000	8"	144"w x 96"h
Ruskin	FSD60	2000, 4000	4", 8"	144"w x 48"h, 128"w x 96"h
Curtain Fire Dampers				
		Max. Velocity (fpm)	Max. Horizontal Size	Max. Vertical Size
United Enertech	FDD-ALB	2000	36"w x 36"h	72"w x 36"h or 36"w x 72"h
Greenheck	DFD-150	4000	48"w x 36"h	72"w x 45"h, 60"w x 56"h, 120"w x 26"h
Pottorff	VFD-10D	4000	36"w x 36"h	120"w x 72"h, 72"w x 120"h
Ruskin	DIBD2	2000, 3000, 4000	36"w x 48"h, 24"w x 24"	72"w x 48"h, 24"w x 24", 24"w x 24"
United Enertech	FDD-SALB	2000	36"w x 36"h	72"w x 36"h or 36"w x 72"h
Greenheck	DFD-150X12	4000	30"w x 30"h	36"w x 36"h
Pottorff	VFD-10D-IMA	4000	-	36"w x 48"h
Ruskin	DIBD20	2000, 3000, 4000	36"w x 48"h, 24"w x 24"	54"w x 54"h, 24"w x 24"h, 24"w x 24"h
Ceiling Radiation Dampers (for wood truss systems)				
		No. of UL Design listings	Max. Damper Size	Max. Inlet Size
United Enertech	C-SR-WT	10	18"x18" (or max. 324 sq. in.)	12"
Greenheck	CRD-1WT	20	21"x18"	10"
Pottorff	CFD-521	19	18"x18"	11"
Ruskin	CFD7T	12	18"x18"	N/A



www.unitedenertech.com

3005 S. Hickory Street
Chattanooga, TN 37407
423-698-7715

sales@unitedenertech.com

