

**MODEL DTO/R-MTS**

**Double Thermostat Override Release with Momentary Test Switch**

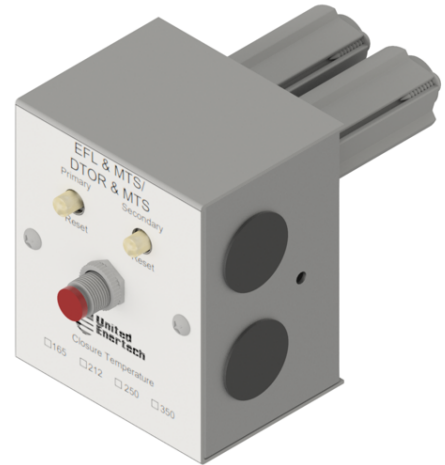
**APPLICATION**

The DTO/R-MTS is an electric Resettable "Fuse Link" with High limit closure for smoke control systems and includes a Momentary Test. The EFL/MTS is a UL Classified heat response device used in conjunction with United Enertech F/S dampers. The DTO/R-MTS is an optional device which be ordered with electric actuators. The DTO/R-MTS allows the damper to be reopened after the initial closure for dynamic smoke control. The DTO/R-MTS disengages the power to the actuator when the temperature exceeds 165 Deg. F (74C) or 212 Deg. F (100C) depending on the model ordered and installed.

**OPERATION**

**Fire Condition:** When the temperature exceeds 165 Deg. F (74C) or 212 Deg. F (100C) or 250 Deg F (121C) are detected, the damper will close. The DTO/R allows the dampers to be reopened after the initial closure for dynamic smoke control. The DTO/R can be reopened by pressing the reset button located on the DTO/R-MTS assembly.

**Smoke Conditions:** When smoke signal is detected, the damper will close and remain closed until the signal ceases (or the smoke detector is reset). The system will then reset and the damper will open.



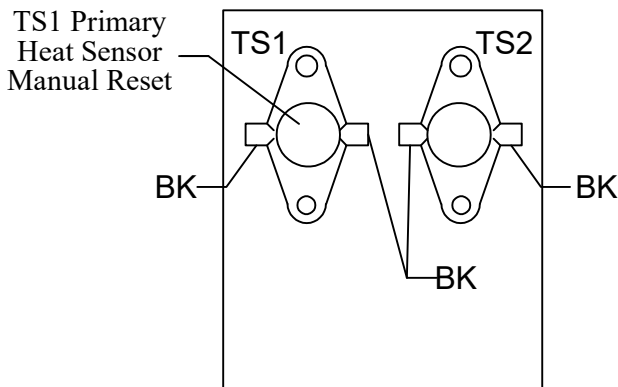
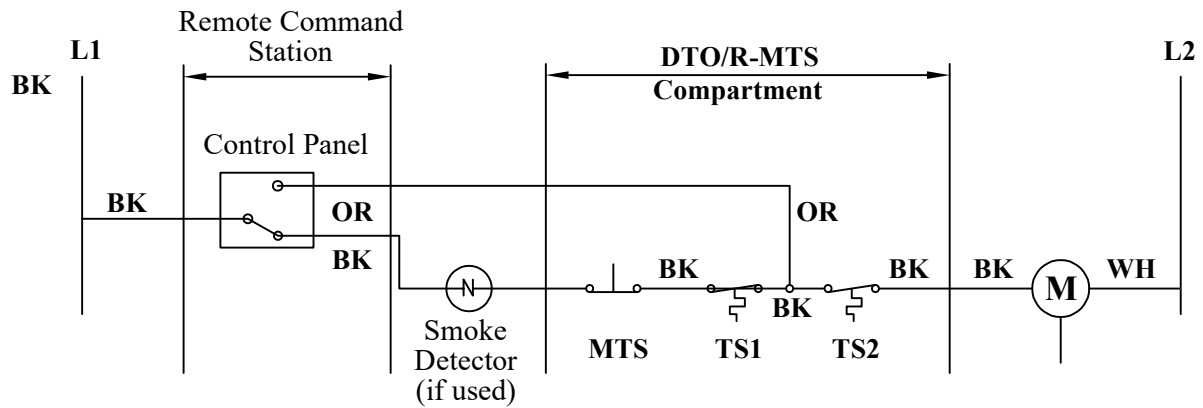
**Testing**


**Momentary Test Switch (MTS)** The MTS is a standard component to the DTO/R which allows the damper to be cycled tested to verify the operation of the damper. Cycle Testing is a requirement of the International Fire Code (IFC) and NFPA standards.

U.L. 555S Classified at 165°F, 212°F, 250°F or 350°F depending upon Actuator/Operator  
\*See Actuator/Operator Schedule



**DTO/R-MTS Wiring Detail**



		3005 South Hickory Street Chattanooga, Tennessee 37407 Tel: (423) 698-7715 Fax: (423) 698-6629 www.unitedenertech.com	
<b>DTO/R-MTS Double Link with MTS Momentary Test Switch</b>			
DRAWN BY: KSM	DATE: January 2024	REV. DATE:	REV. NO.
		DWG. NO.: ED-002	